

Cross Section of Total Project

Driving Logs are available at the Public Works Department

Scale 1" = 30'

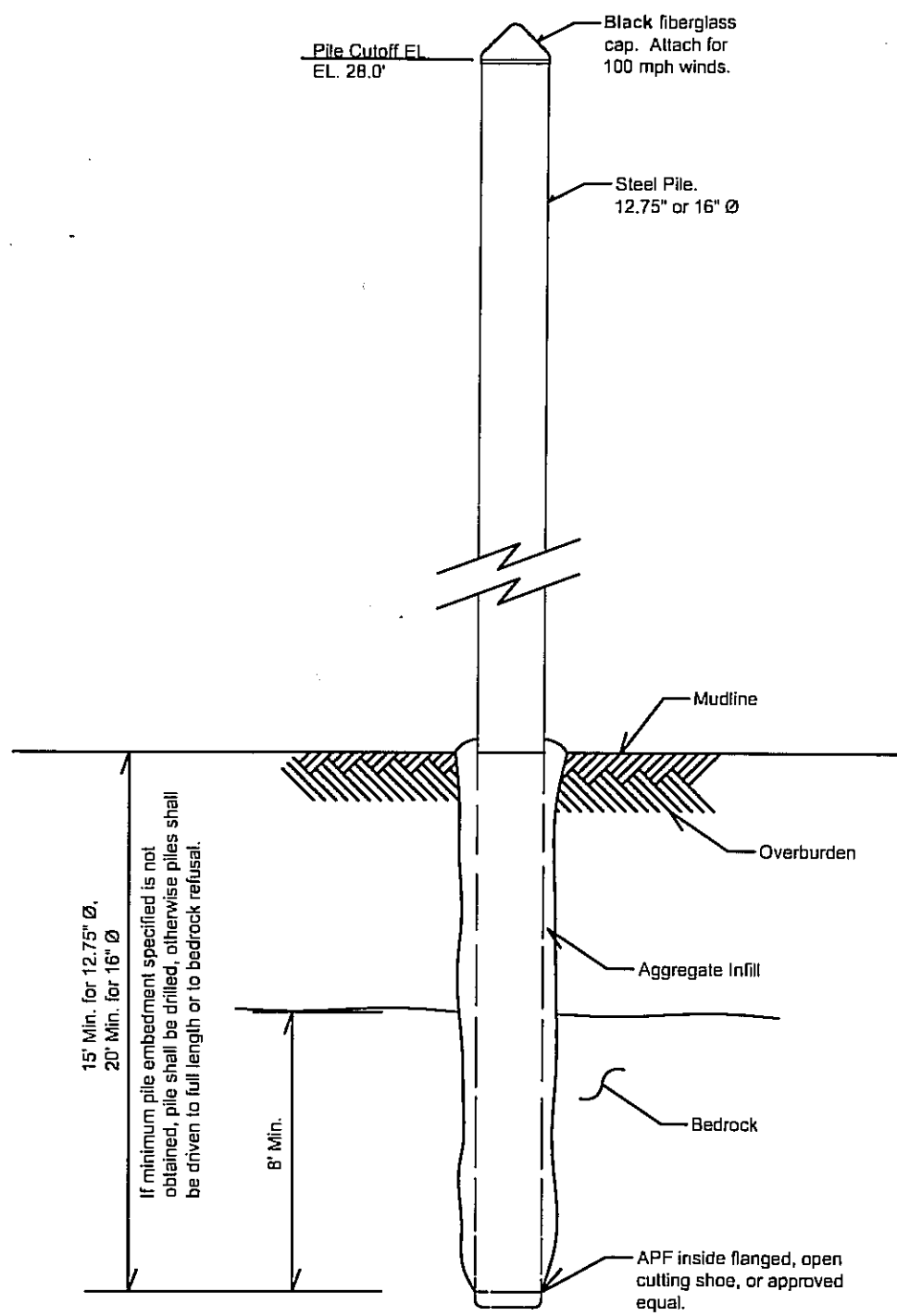
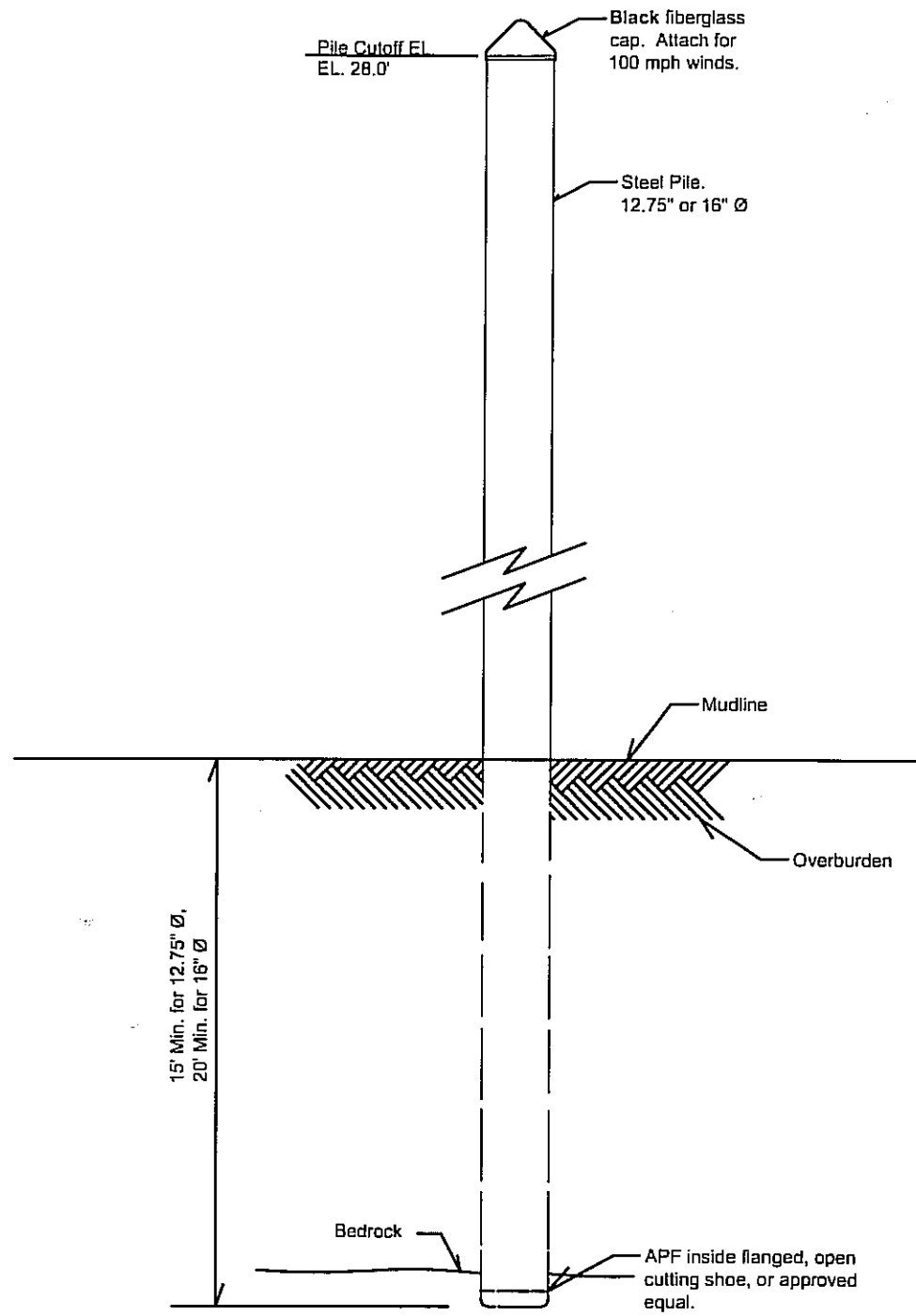
BY	DATE

RECORD OF REVISIONS

By: Ketchikan Gateway Borough
 1900 First Ave.
 Ketchikan, AK 99901

Loring Service Area
 Float Project
 In Ketchikan, AK

NOTE: DO NOT SCALE FROM THESE PLANS—USE DIMENSIONS.	
DESIGNED BY: <i>Joe May</i>	PROJECT No.
DRAWN BY: <i>JGM</i>	DATE: <i>Dec. 2009</i>
SCALE:	SHEET <u>1</u>



Several methods may be use for pile sockets; drive pile to refusal and drill through the inside of pile to the required depth and drive pile to the required depth plus refusal, drill pile socket hole to the required depth and drive pile to refusal and install infill, or approved equal.

BY	DATE

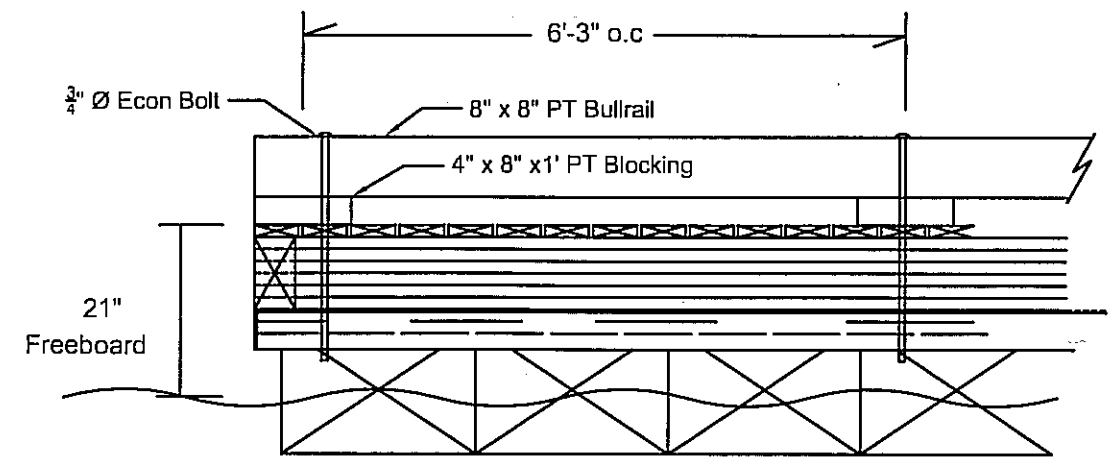
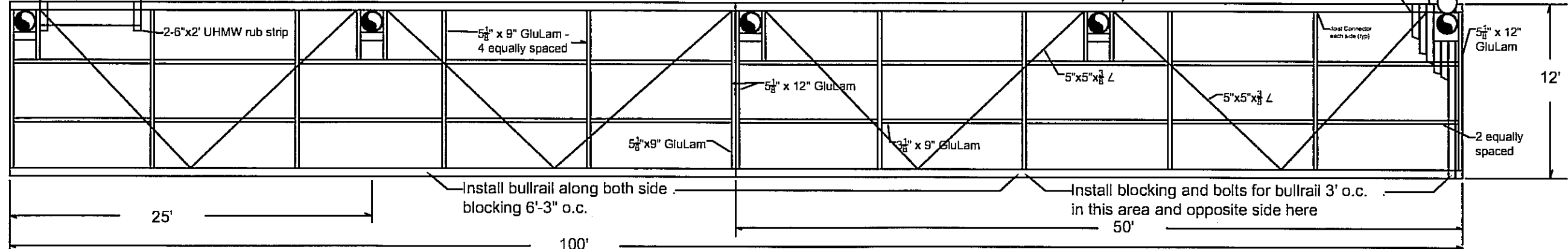
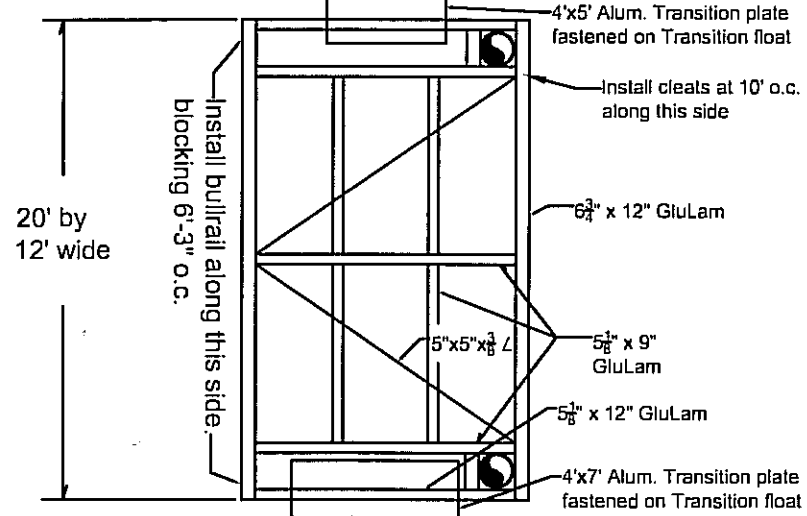
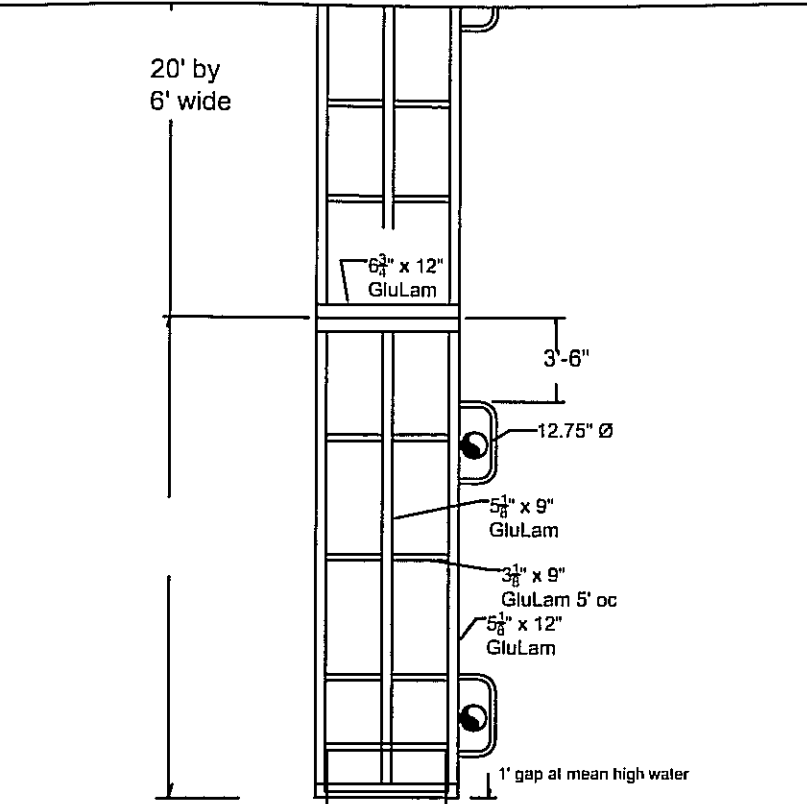
RECORD OF REVISIONS

By: Ketchikan Gateway Borough
 1900 First Ave.
 Ketchikan, AK 99901

Loring Service Area
 Float Project
 In Ketchikan, AK

NOTE: DO NOT SCALE FROM THESE PLANS--USE DIMENSIONS.

DESIGNED BY: <i>Joe May</i>	PROJECT No.
DRAWN BY: <i>JGM</i>	DATE: <i>DEC. 2009</i>
SCALE:	SHEET <i>2</i>



In Special area, blocking spacing will be 3' o.c. and bolts will be 7/8\"/>

Scale 1/2" = 1' - 0"

BY	DATE

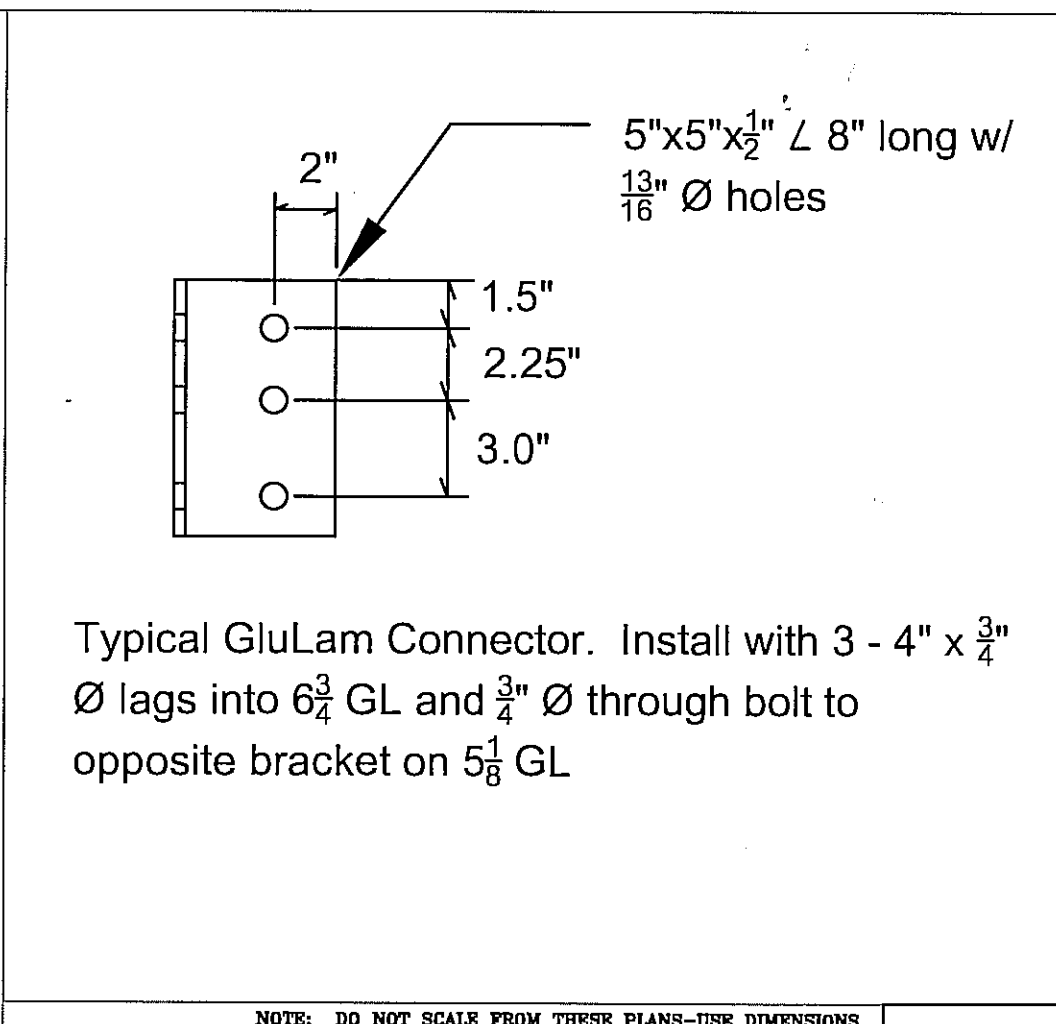
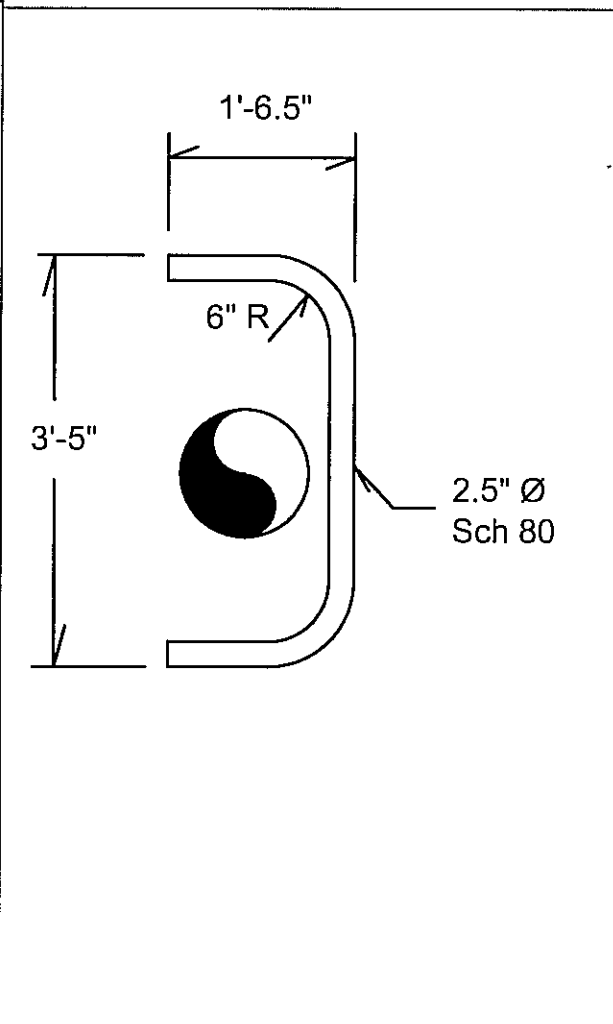
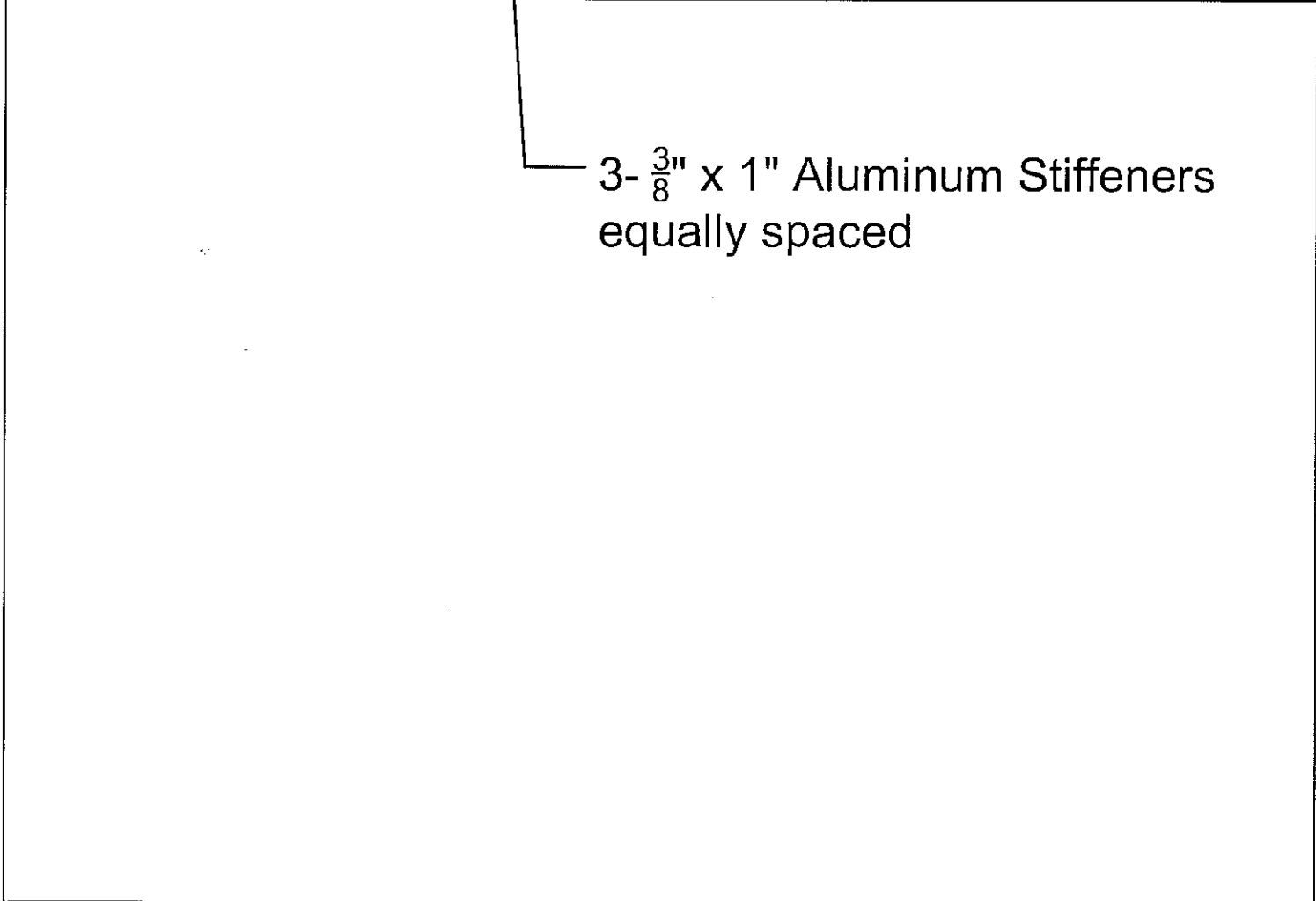
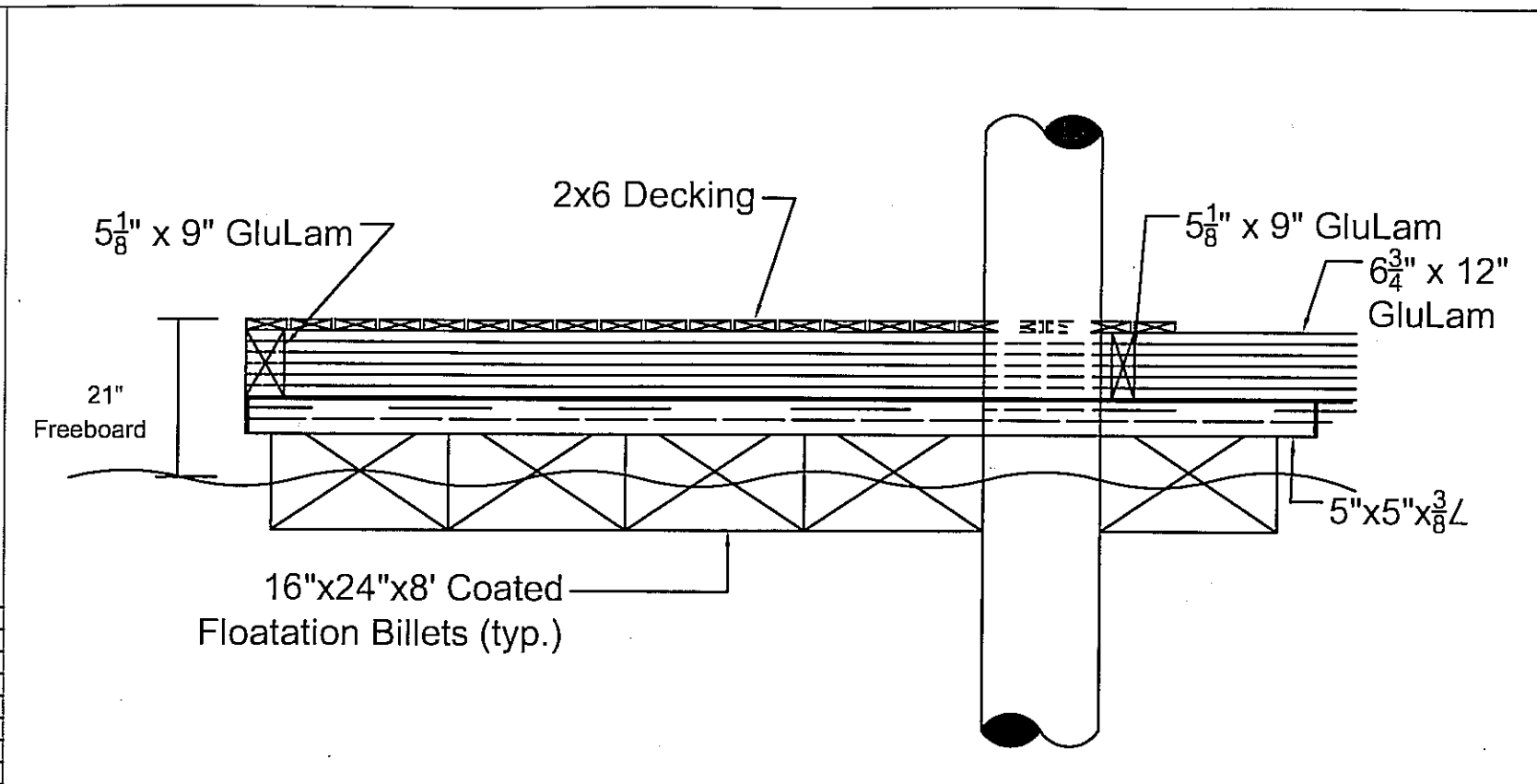
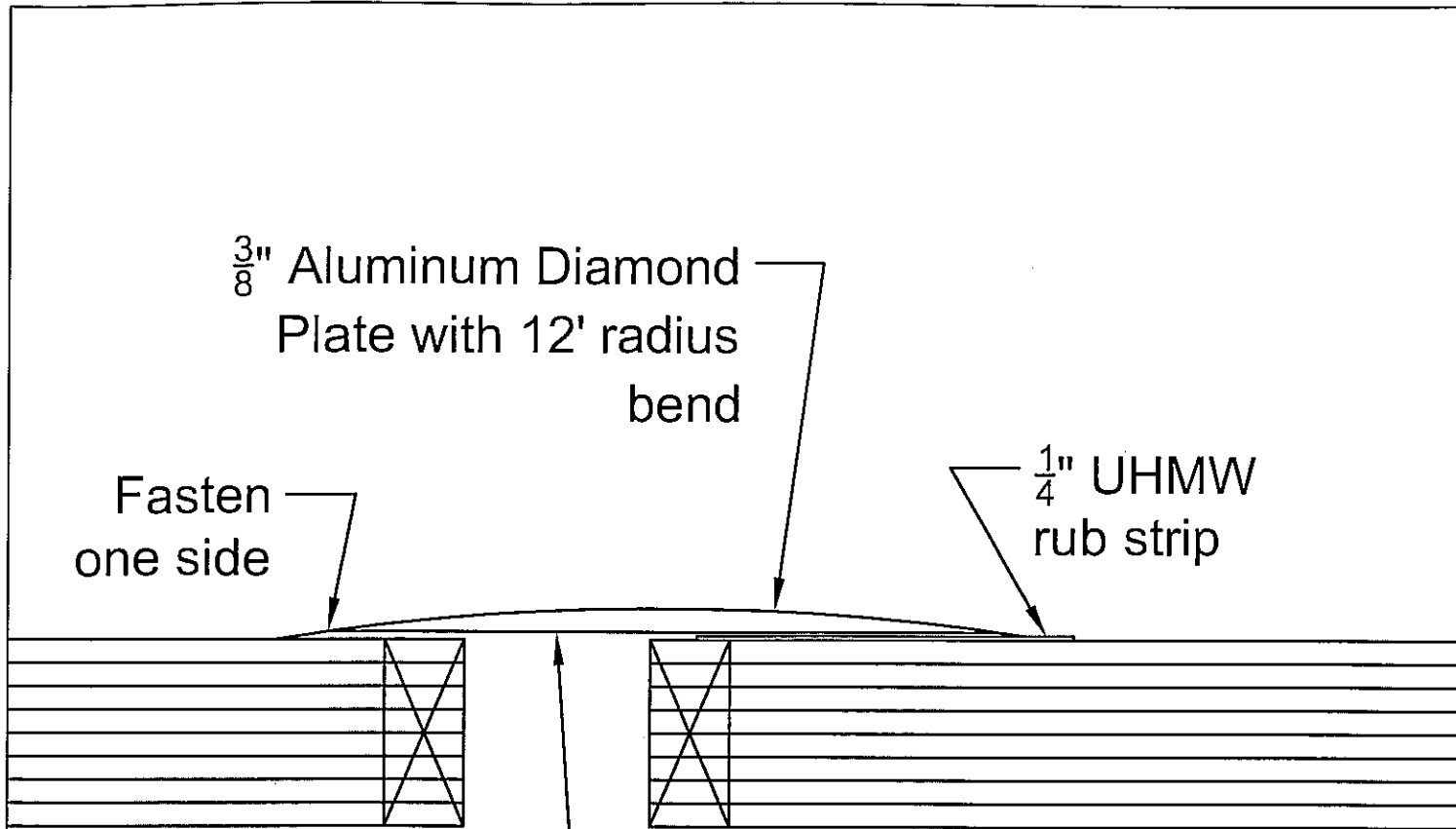
RECORD OF REVISIONS

By: Ketchikan Gateway Borough
 1900 First Ave.
 Ketchikan, AK 99901

Loring Service Area
 Float Project
 In Ketchikan, AK

NOTE: DO NOT SCALE FROM THESE PLANS--USE DIMENSIONS.

DESIGNED BY: Joe May	PROJECT No.
DRAWN BY: JGM	DATE: Jan. 2010
SCALE: 1/8" = 1'-0"	SHEET 3

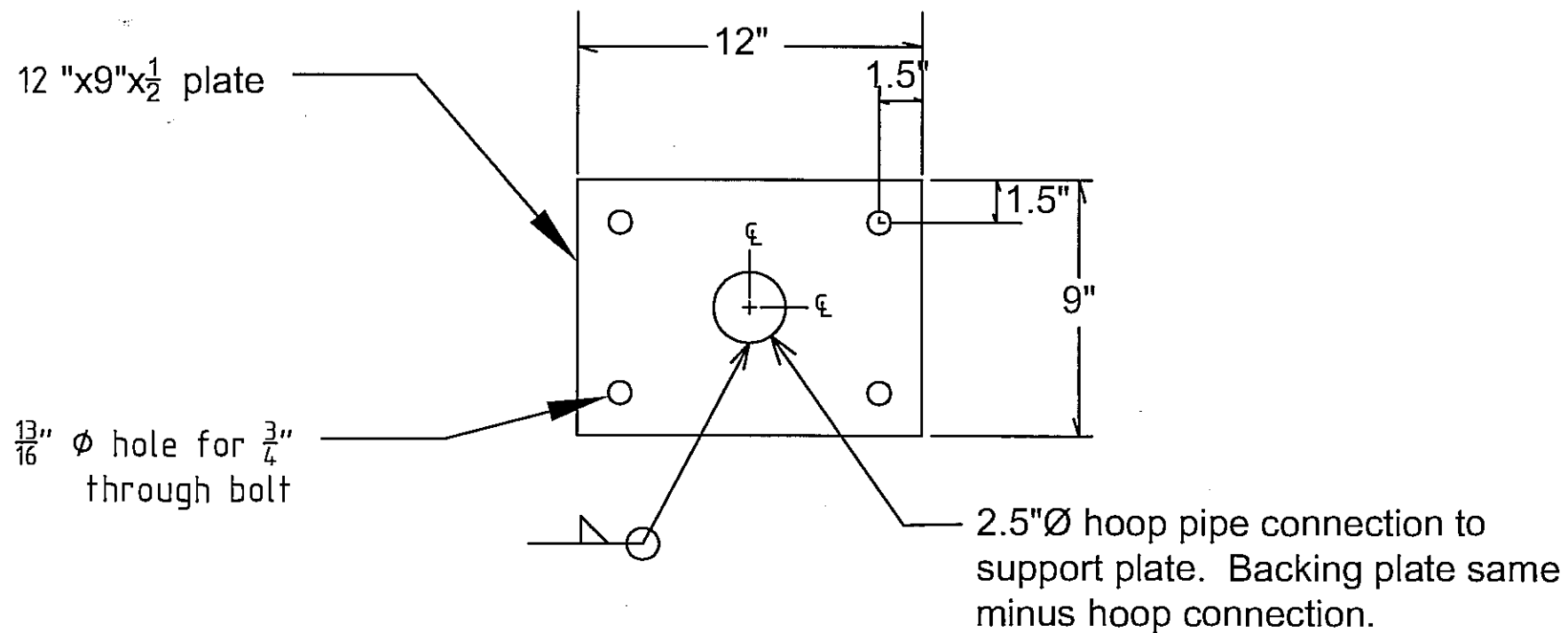
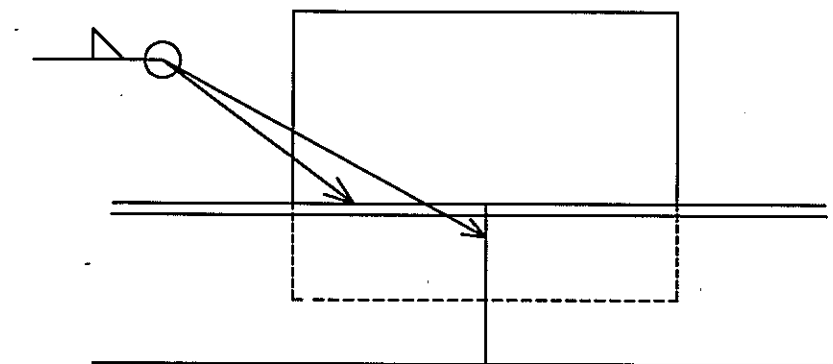
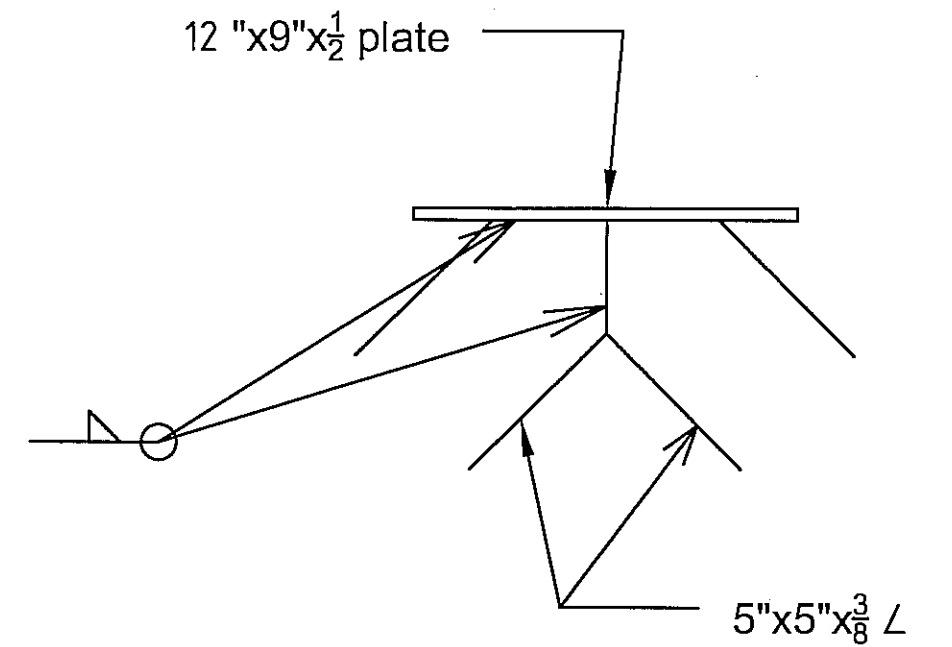
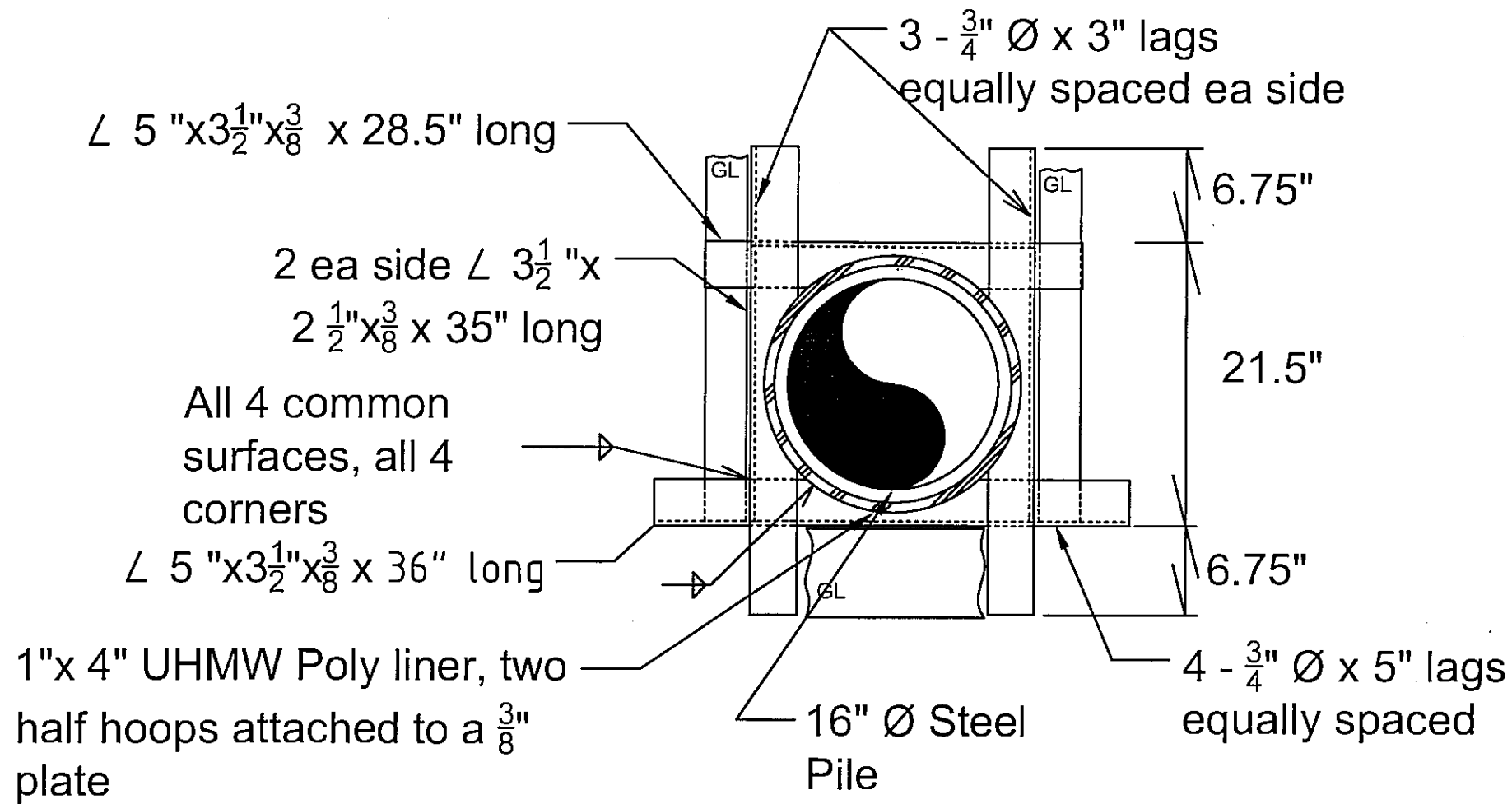


BY	DATE
RECORD OF REVISIONS	

By: Ketchikan Gateway Borough
 1900 First Ave.
 Ketchikan, AK 99901

Loring Service Area
 Float Project
 In Ketchikan, AK

NOTE: DO NOT SCALE FROM THESE PLANS—USE DIMENSIONS.	
DESIGNED BY: <i>Joe May</i>	PROJECT No.
DRAWN BY: <i>JGM</i>	DATE: <i>Jan. 2010</i>
SCALE:	SHEET <i>4</i>



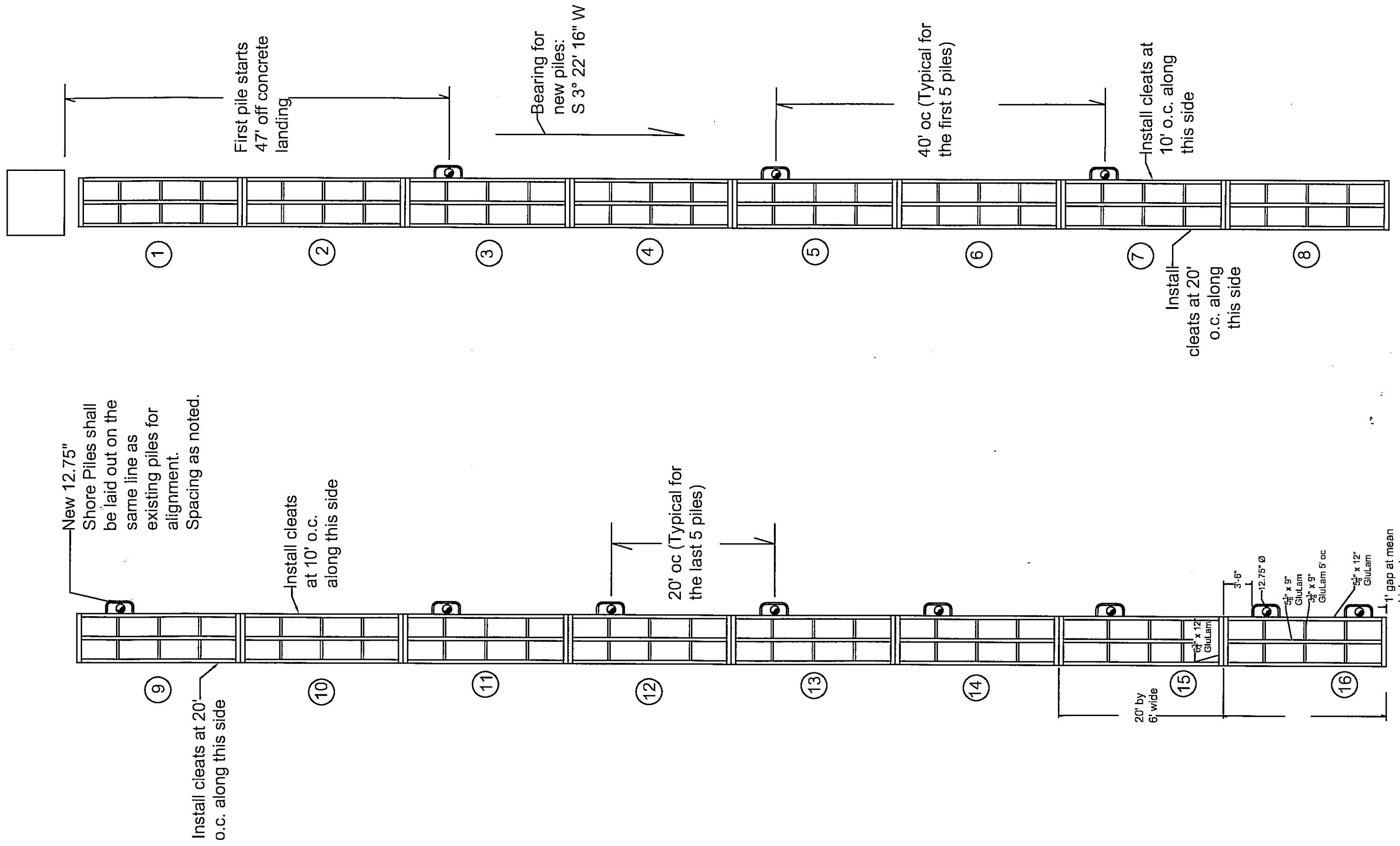
NOTE: DO NOT SCALE FROM THESE PLANS—USE DIMENSIONS.

BY	DATE
RECORD OF REVISIONS	

By: Ketchikan Gateway Borough
 1900 First Ave.
 Ketchikan, AK 99901

Loring Service Area
 Float Project
 In Ketchikan, AK

DESIGNED BY: <i>Joe May</i>	PROJECT No.
DRAWN BY: <i>JCM</i>	DATE: <i>Nov. 2009</i>
SCALE:	SHEET <i>5</i>



BY	DATE

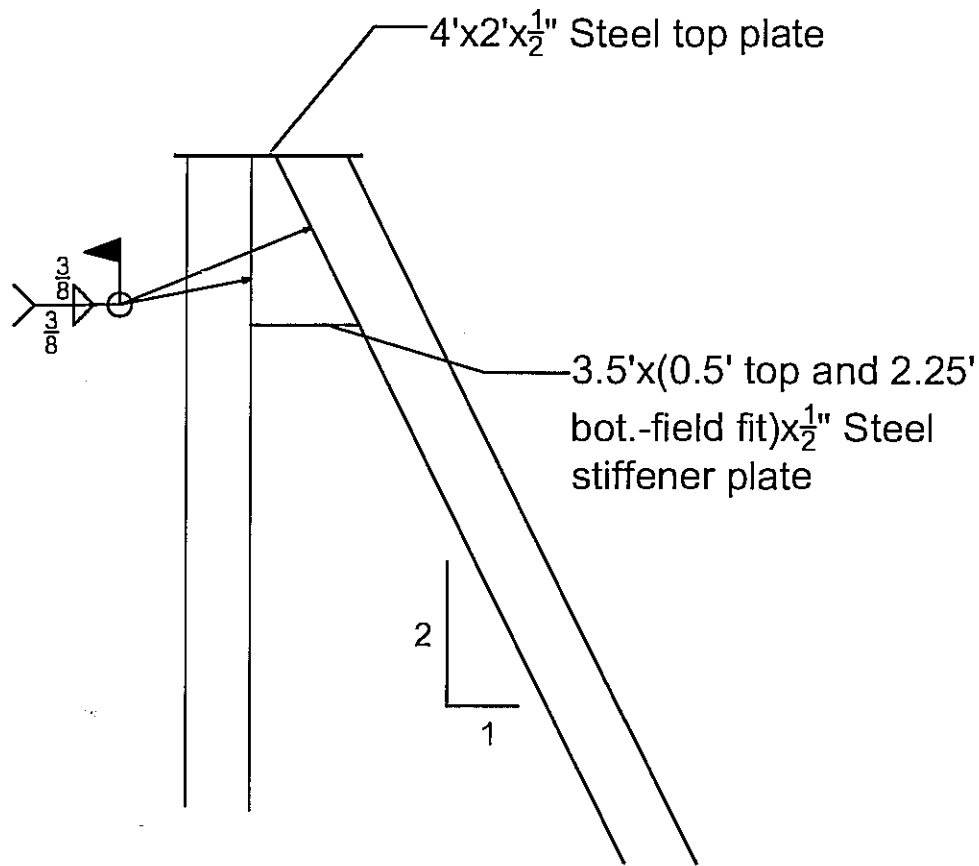
RECORD OF REVISIONS

By: Ketchikan Gateway Borough
 1900 First Ave.
 Ketchikan, AK 99901

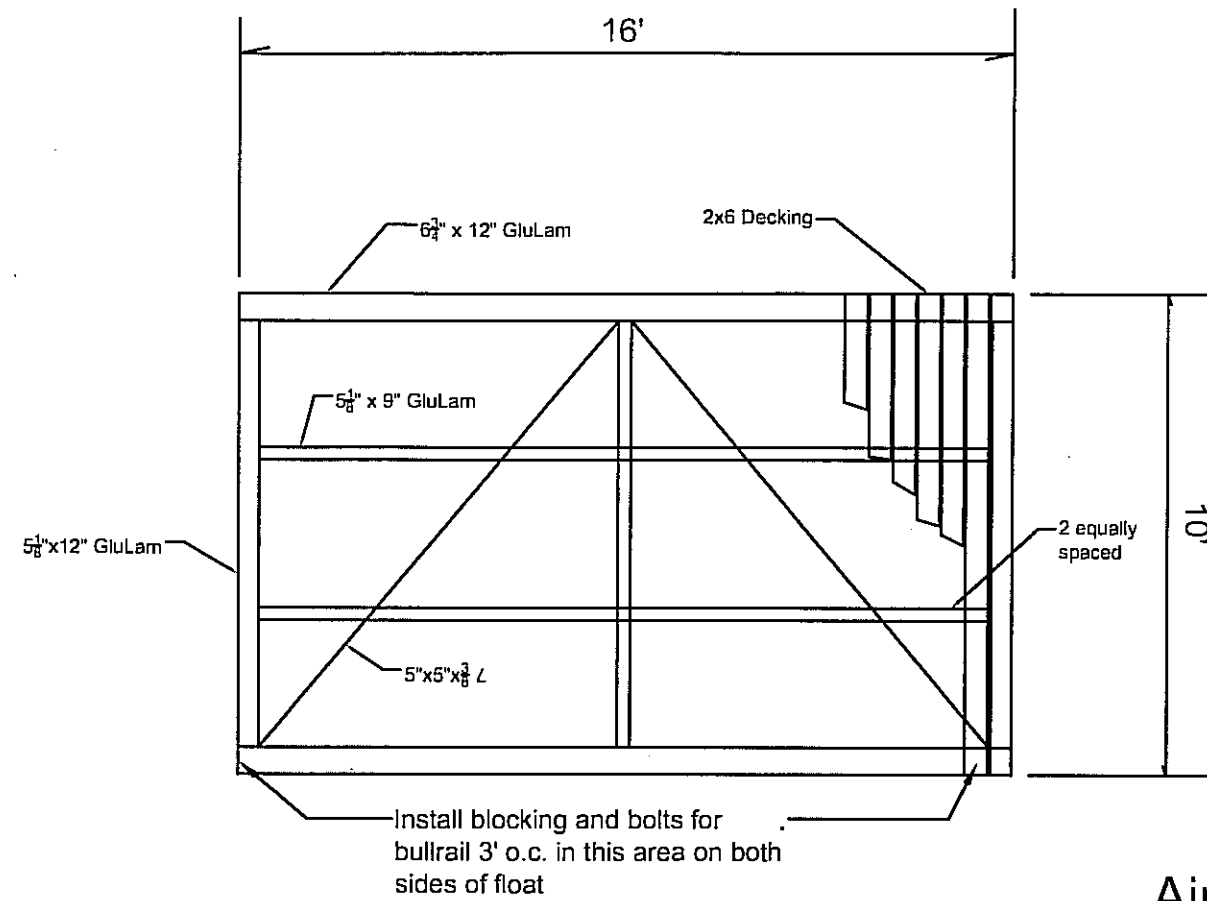
*Loring Service Area
 Float Project
 In Ketchikan, AK*

NOTE: DO NOT SCALE FROM THESE PLANS—USE DIMENSIONS.

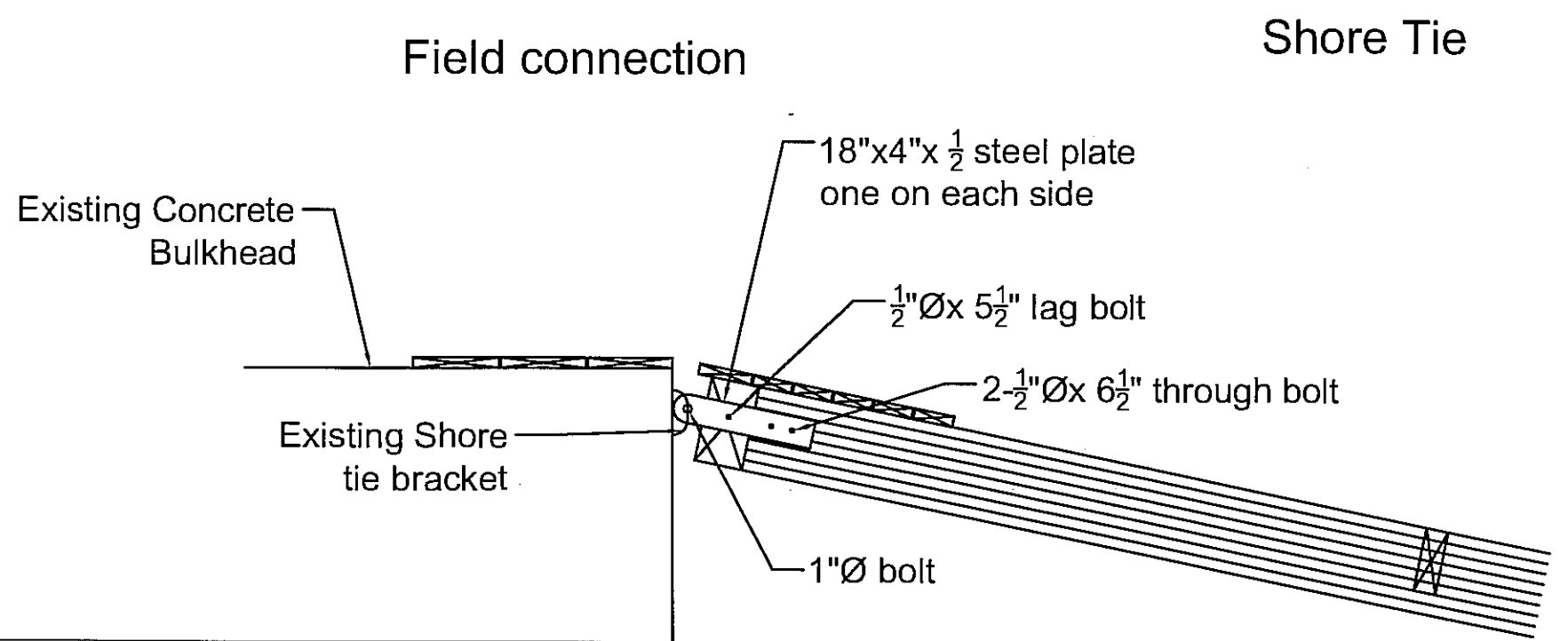
DESIGNED BY: <i>Joe May</i>	PROJECT No.
DRAWN BY: <i>JGM</i>	DATE: <i>Nov. 2009</i>
SCALE:	SHEET 6



Batter Pile



Airplane Float



Field connection

Shore Tie

NOTE: DO NOT SCALE FROM THESE PLANS--USE DIMENSIONS.

BY	DATE

RECORD OF REVISIONS

By: Ketchikan Gateway Borough
1900 First Ave.
Ketchikan, AK 99901

Loring Service Area
Float Project
In Ketchikan, AK

DESIGNED BY: <i>Joe May</i>	PROJECT No.
DRAWN BY: <i>JGM</i>	DATE: <i>Nov. 2009</i>
SCALE:	SHEET <u>7</u>

General Notes:

Loading:

IBC 2003 and AASHTO Standards 17th edition.
 120 mph 3 second gust exposure D
 Seismic Zone B

- 1) Live Load on floats 50 pounds per square foot
- 2) Snow Load ground - 55 pounds per square foot
- 3) Wind Load on floats 300 pounds per lineal foot
- 4) Live Load on floats 50 pounds per square foot
- 5) Float design to reflect 100 year storm with 6 foot waves

NOTE: DO NOT SCALE FROM THESE PLANS—USE DIMENSIONS.

BY	DATE
RECORD OF REVISIONS	

By: Ketchikan Gateway Borough
 1900 First Ave.
 Ketchikan, AK 99901

*Loring Service Area
 Float Project
 In Ketchikan, AK*

DESIGNED BY: <i>Joe May</i>	PROJECT No.
DRAWN BY: <i>JGM</i>	DATE: <i>Nov. 2009</i>
SCALE:	SHEET <i>8</i>